

# SCOURER *SCR*

# USER MANUAL



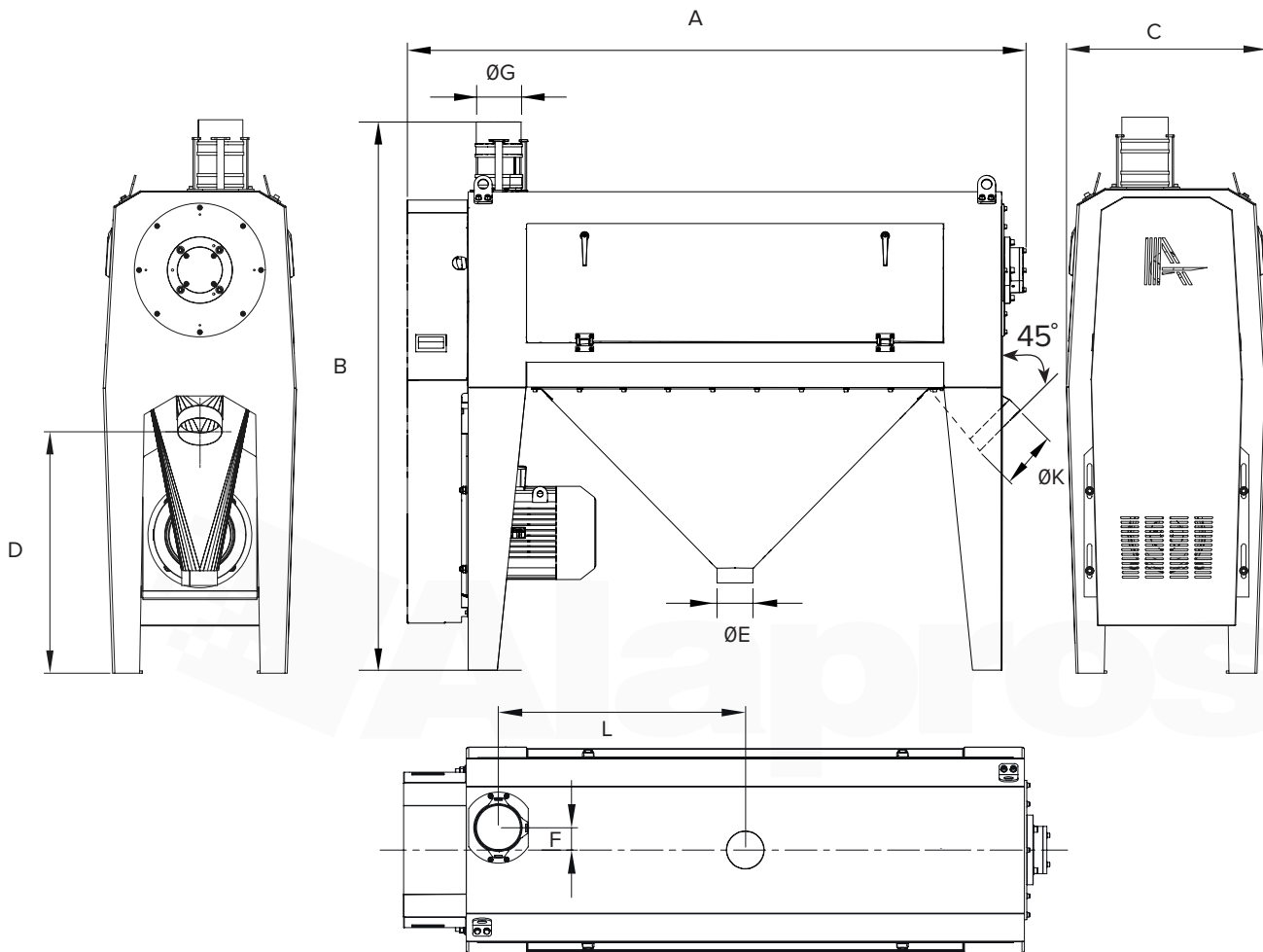
INNOVATION  
MORE THAN  
JUST A WORD



[www.alapros.com](http://www.alapros.com)

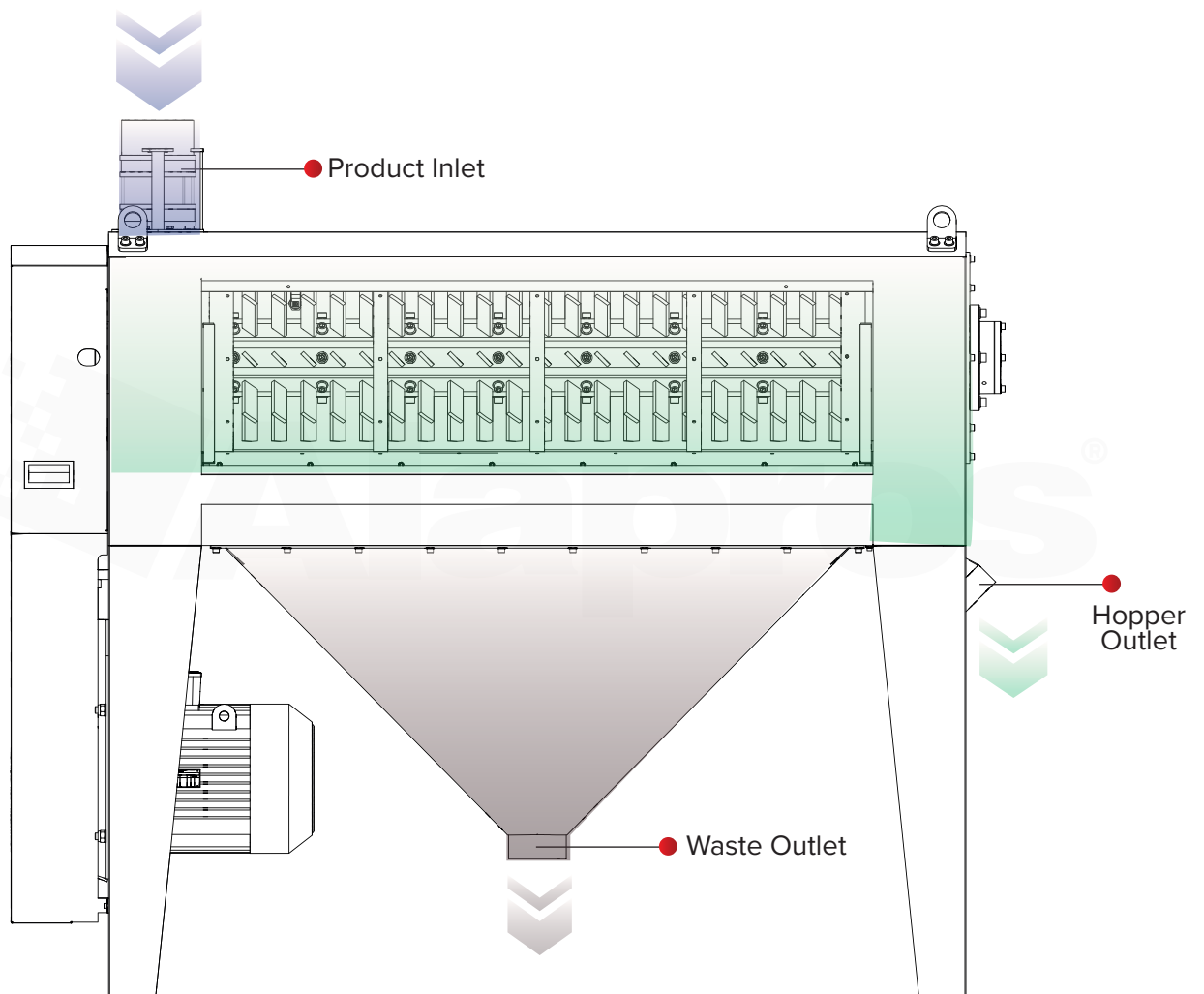
 **Alapros**<sup>®</sup>

## 1.9 STRUCTURAL FEATURES



MODEL	DIMENSIONS mm.									WEIGHT kg.
	A	B	C	D	ØE	F	ØG	ØK	L	
SDR 30/100	1780	1830	700	800	120	70	120	120	780	550
SDR 30/130	2060	1830	700	800	120	70	150	150	780	620
SDR 40/130	2060	1830	700	800	120	70	150	150	596	675

## 1.10 FEATURES OF THE SCOURER



## 1.11 RANGE OF MODELS AND TONNAGE TECHNICAL

MODEL	DIMENSION					
	Max. Capacity (t/h)				Motor(kw)	Gross Volume (m <sup>3</sup> )
	Soft Wheat		Rough Wheat			
	1. Cleaning	2. Cleaning	1. Cleaning	2. Cleaning		
SDR 30/100	6	5	5	4	7.5	3.9
SDR 30/130	10	8	8	7	11	4.7
SDR 40/130	16	14	14	12	15	4.7



## 1.12 FEATURES OF THE SCOURER

The Scourer of the SDR Series is placed horizontally.

